

Superintendent's Community Forum

October 19, 2010



Barbara A. Peters, Ed.D.,

Superintendent of Schools

Elmsford Union Free School District

Three Core Beliefs:

- Children First
- No Excuses
- Go 4 It!

Fish Philosophy

- **Play**
- **Be There**
- **Choose Your Attitude**
- **Make Their Day**

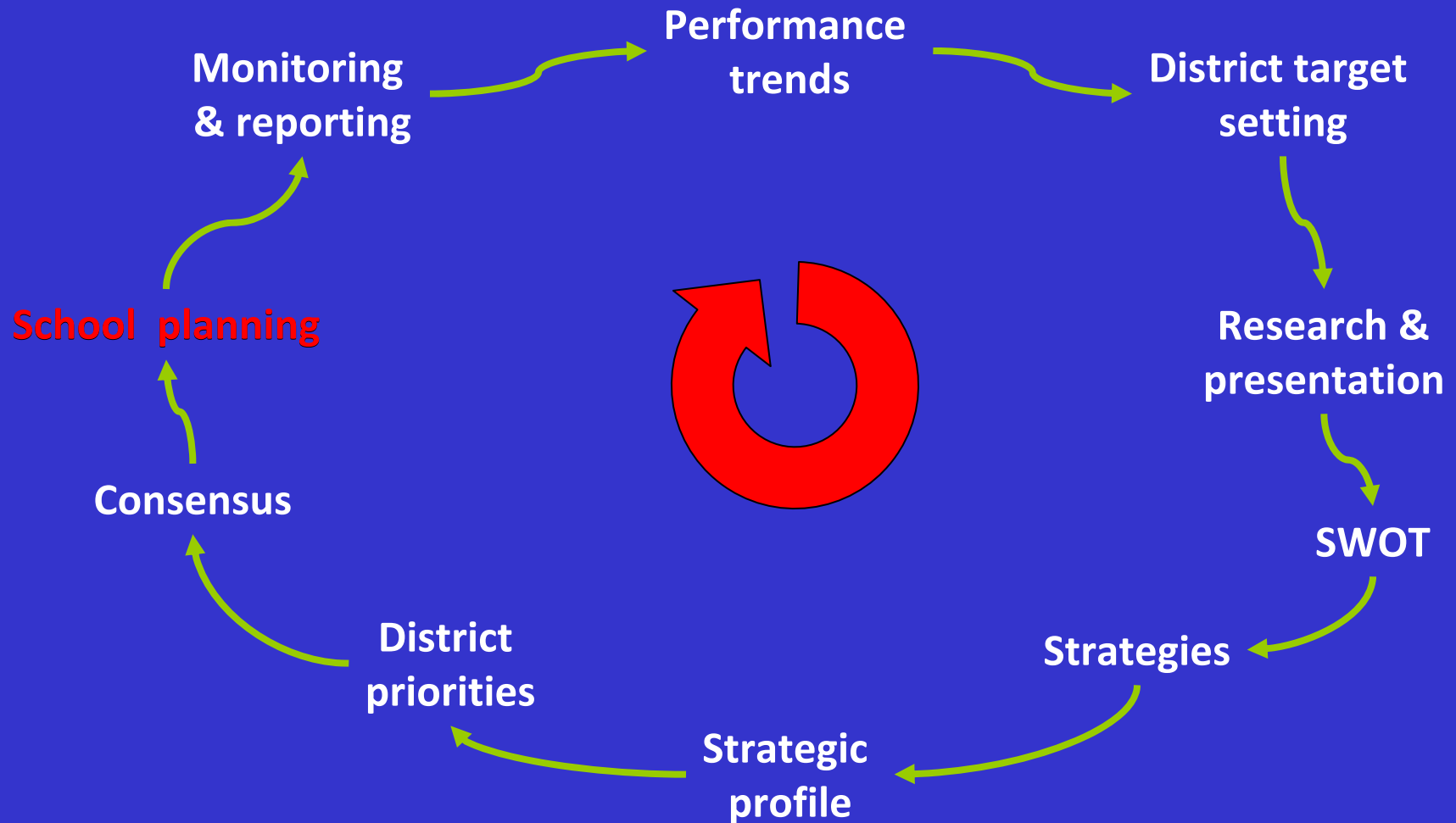


Focus for 2010-2011

- Professional Learning Communities
- Strategic Planning Process across all levels
- Continuous Improvement Model
- Curriculum Project in ELA & math

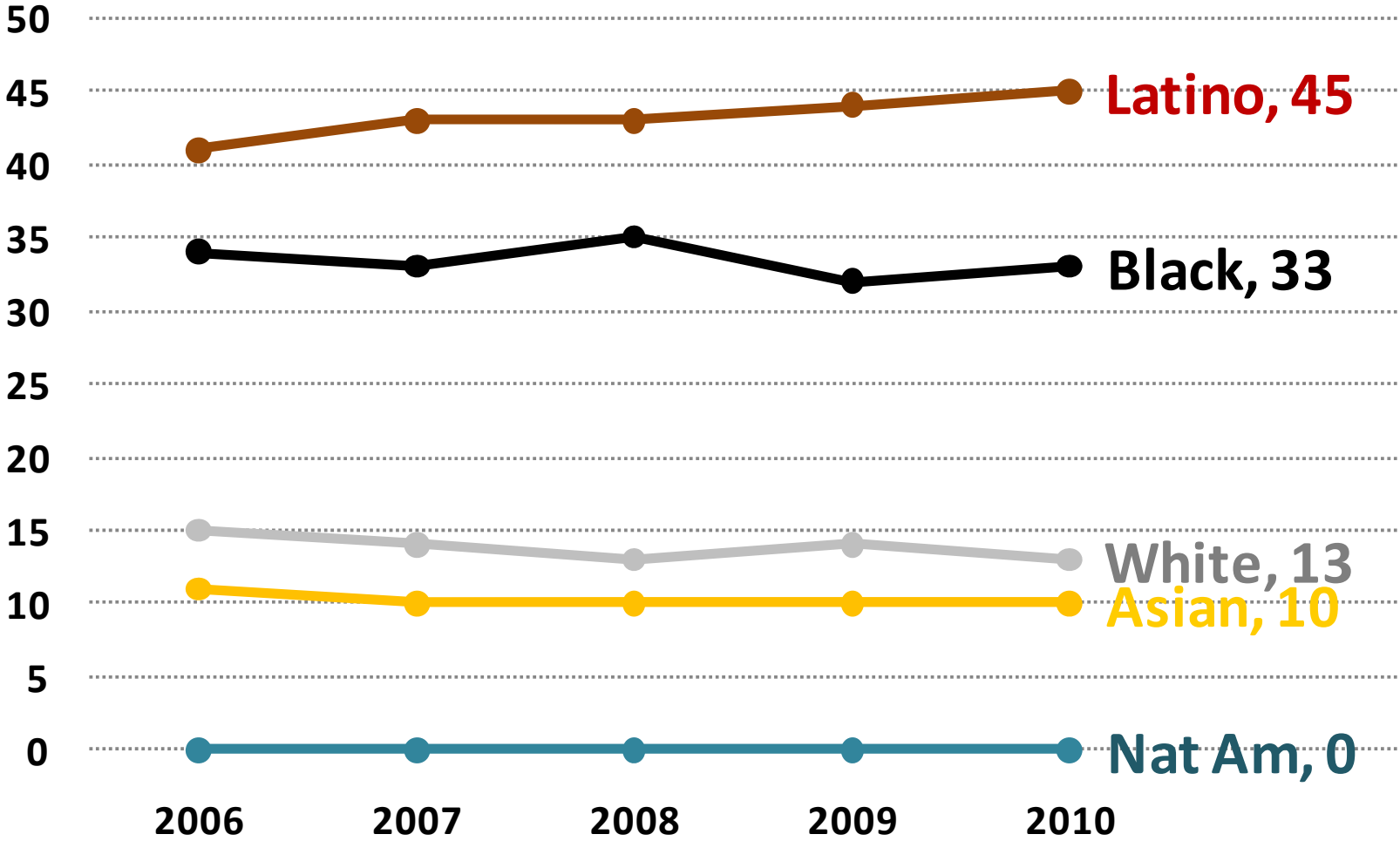


District improvement planning



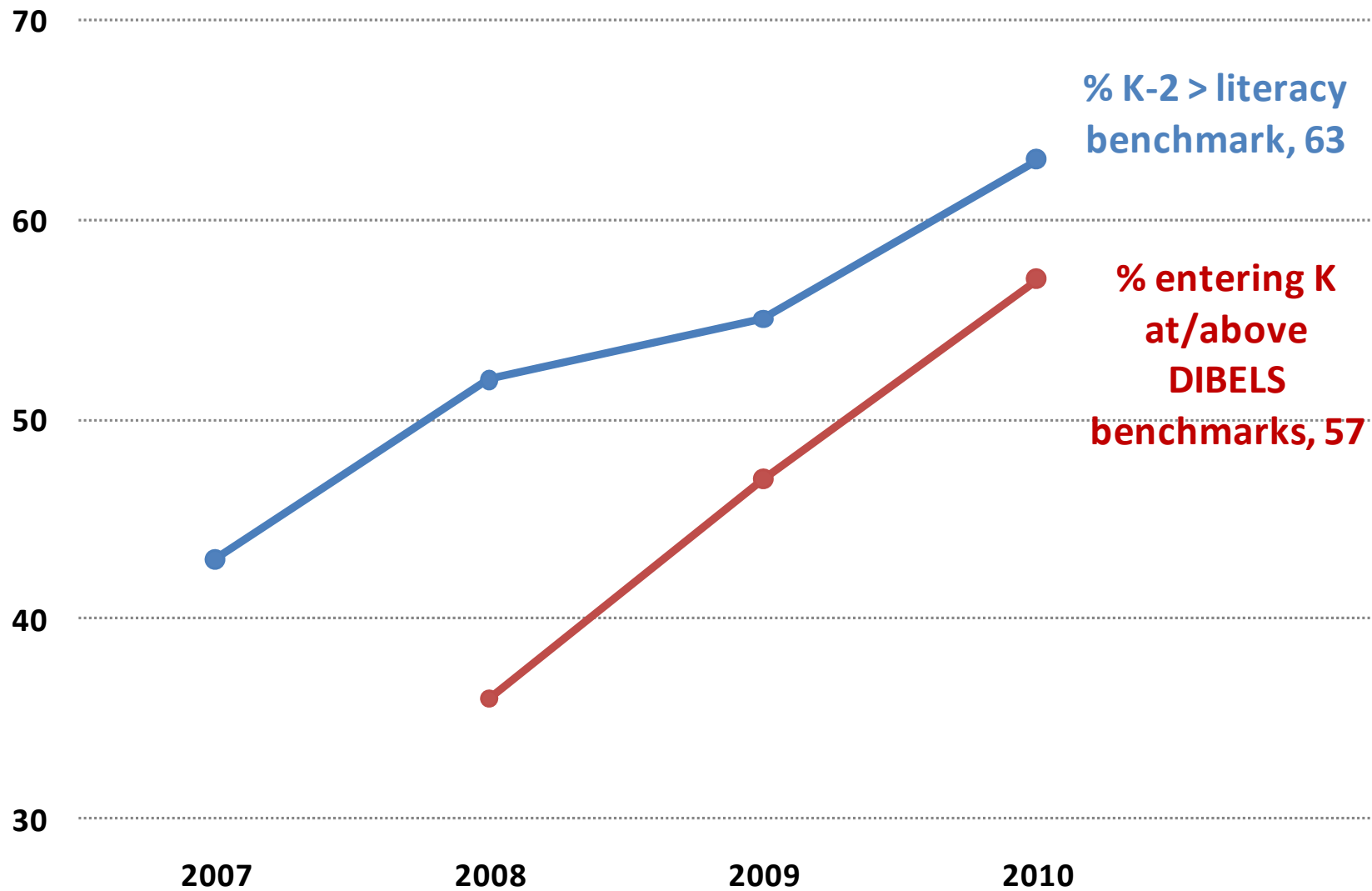
District Demographics

District: Ethnicity (%) trend



District Performance Grades pre-K - 2

Gr. K - 2: DIBELs and Early Literacy



District Performance

Grades 3—8

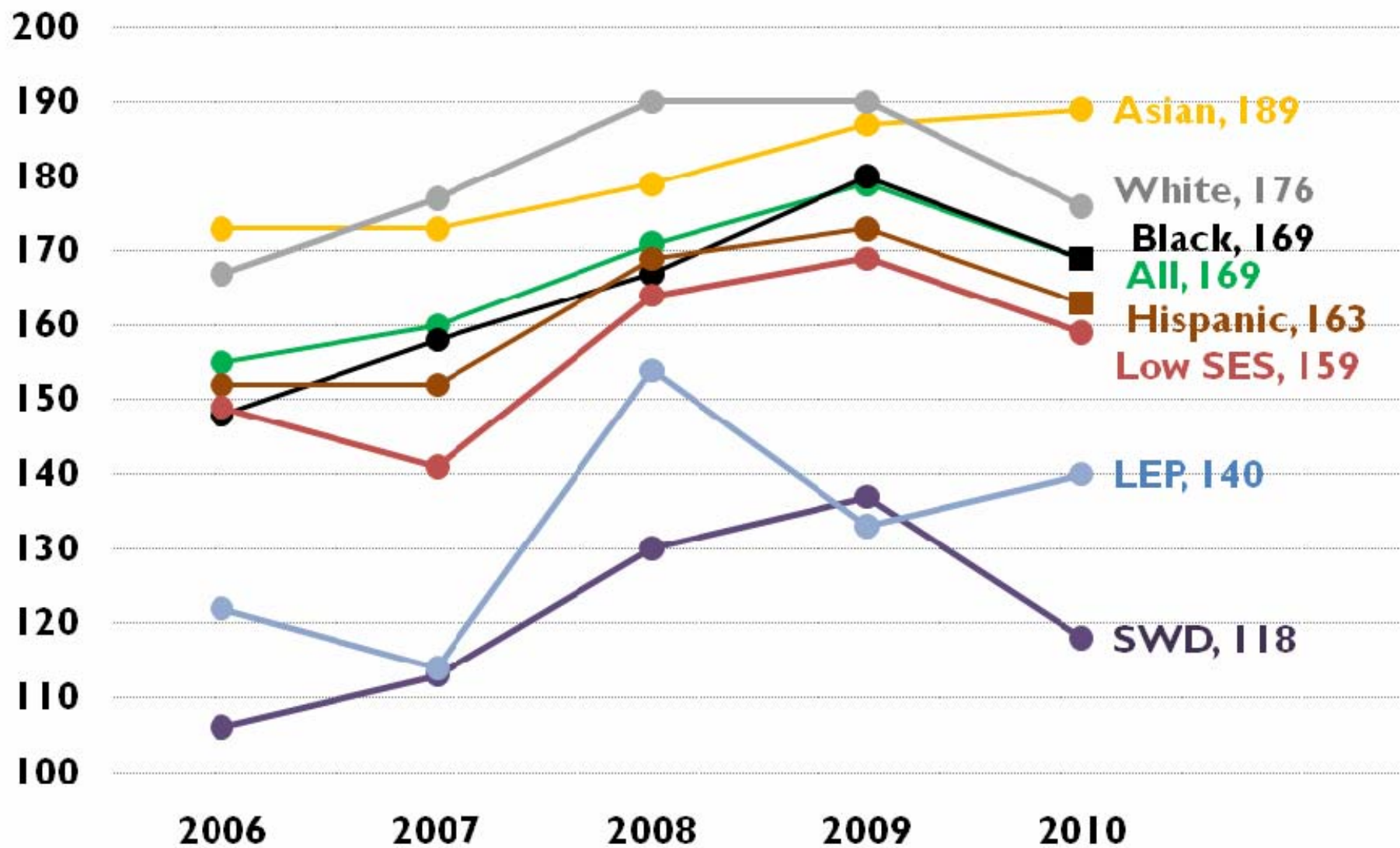
What is the performance index?

- The performance index (PI) calculation:

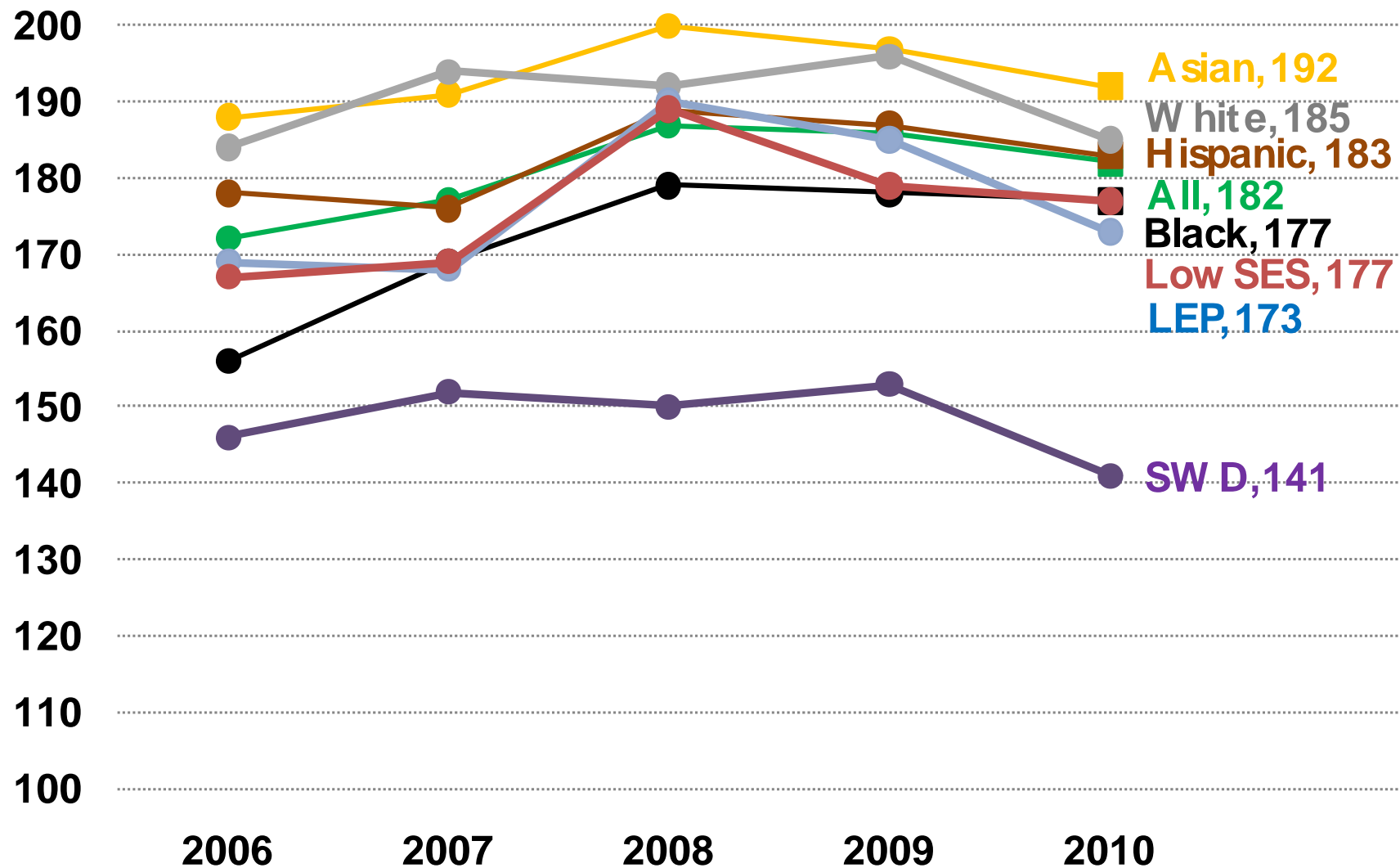
$$\begin{array}{r} \% \geq \text{Level 2} \\ + \% > \text{Level 3} \\ \hline = \text{PI} \end{array}$$

$$\begin{array}{r} 93\% \text{ Lv. 2/above} \\ + 35\% \text{ Lv. 3/above} \\ \hline = 128 \text{ PI} \end{array}$$

District: 3-8 ELA performance index score trend



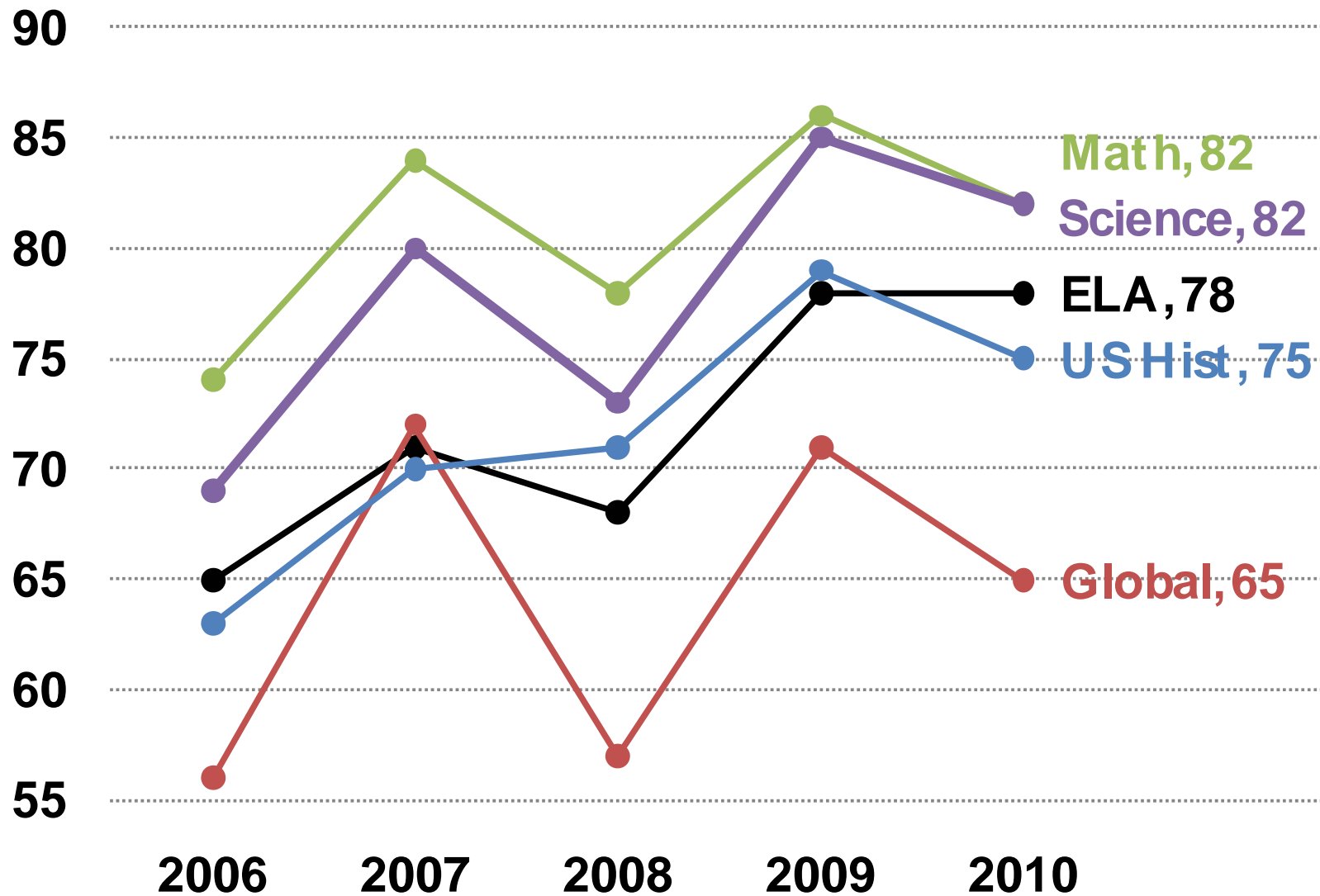
District:3-8 Math performance index score trend



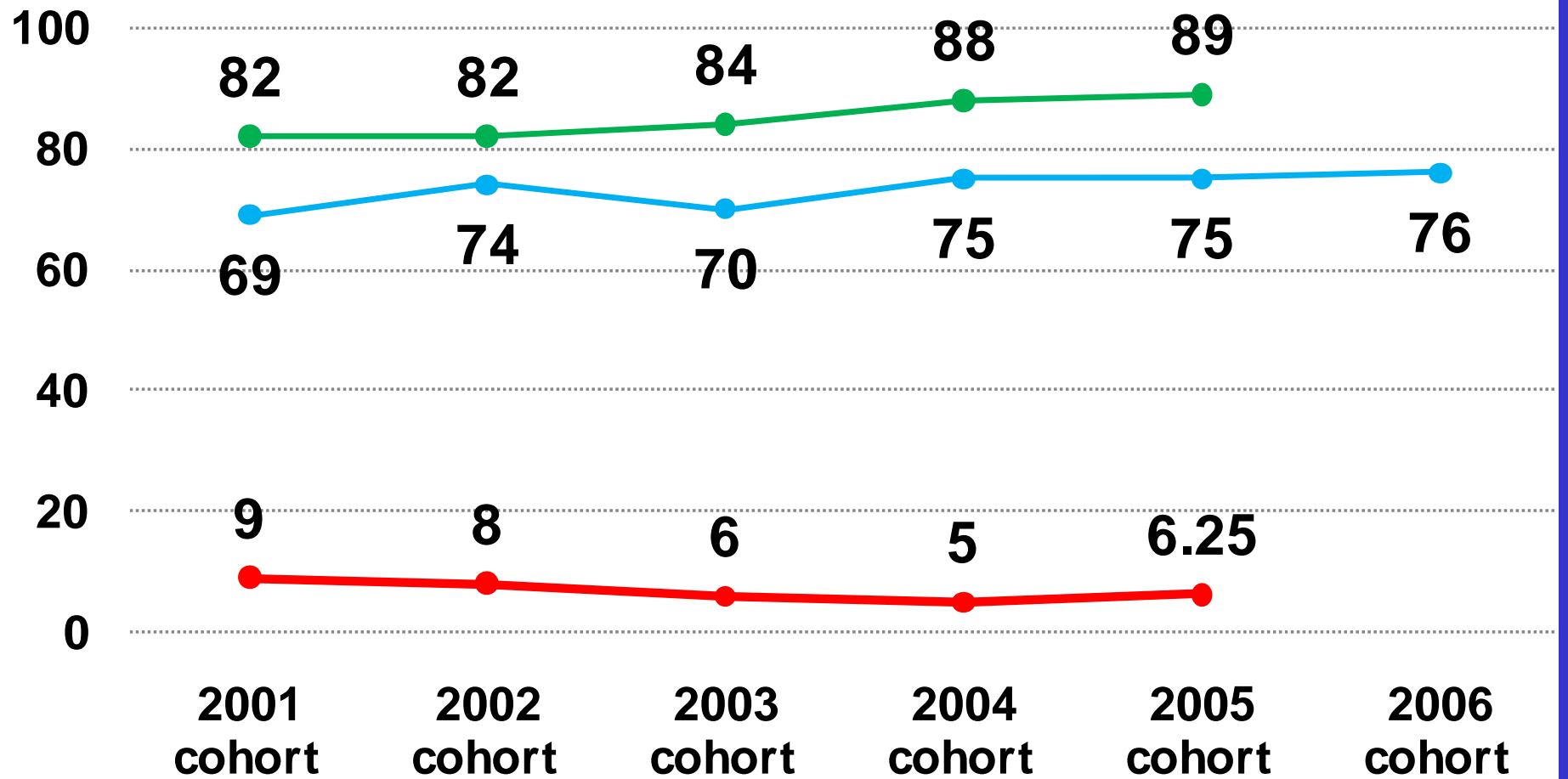
District Performance

Grades 9—12

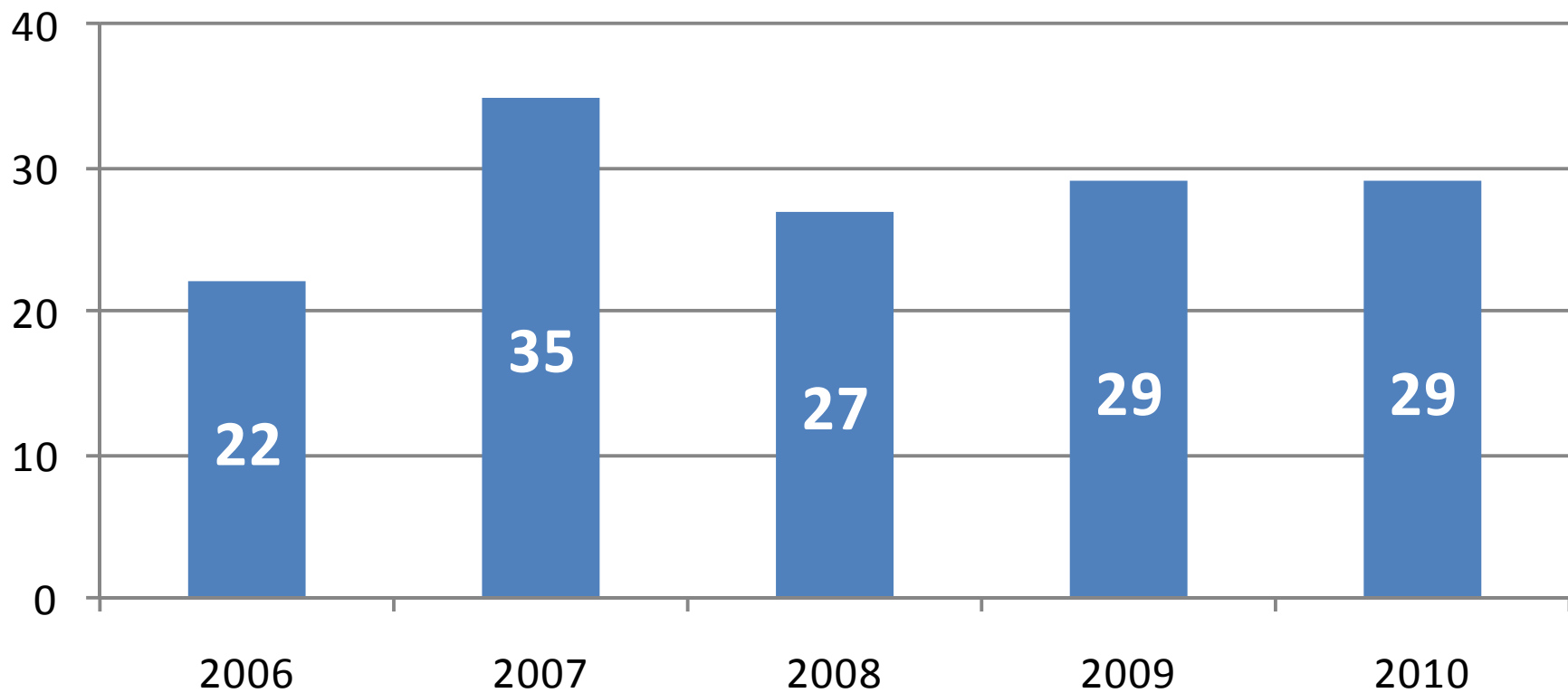
District: % cohort passing regents ≥ 65 (4 yrs)



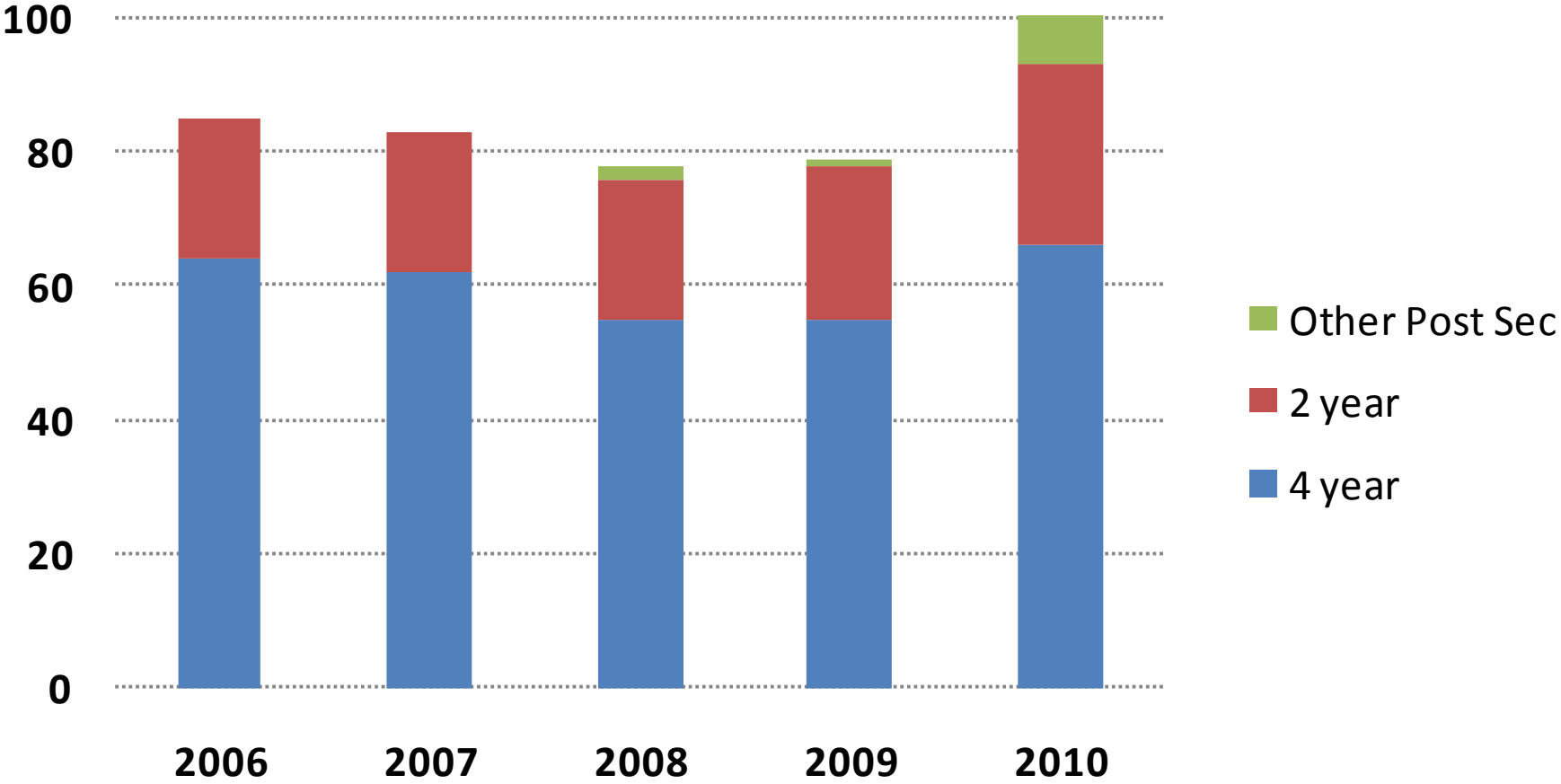
**Cohort Grad (4 yrs by 6/30) vs Grad (5 yrs by 6/30)
Vs Dropout (5 yrs by 6/30)**



% Graduates Receiving Adv. Designation Diploma



District:%graduatesto post-secondary



2010 – 2015 Strategic Plan

Vision:

We believe that the most promising strategy for achieving the mission of the Elmsford Union Free School District is to develop our capacity to function as a professional learning community. We envision schools in which staff:

- Unite to articulate a common mission and identify clear goals;
- Work together in collaborative teams to achieve those goals;
- Seek and implement best practices and research-based strategies for improving student achievement on a continuing basis;
- Monitor each student's progress; and
- Demonstrate a personal commitment to the academic success, talents, well-being, and social development of all students.

Mission:

The mission of the Elmsford Union Free School District is to enhance the teaching and learning process and to raise achievement for all students while developing mutual respect in our diverse community.

Performance Measure	2007	2008	2009	2010		2015 Target
% entering Kindergarteners meeting DIBELS benchmark	-	36	47	57		75
% of pre-K – 2 ≥ grade level literacy benchmark	43	52	55	63		85
Grade 3 – 8 ELA perf index (PI)—all	160	171	179	169	136	175
- Grade 3 – 8 ELA PI—SWD	113	130	137	118	70	140
- Grade 3 – 8 ELA PI—ELL	114	154	149	140	66	140
Grade 3 – 8 Math PI—all	177	187	186	182	145	185
Regents “gate” exams: % cohort pass (≥ 65 in 4 yrs)	75	69	80	76		90
% cohort graduating (4 yrs by 6/30)	70	75	75	76		90
% graduating w/ Adv. Designation Diploma	35	27	29	29		52
Excellence Index: % graduates who have earned college credit and/or scored ≥ “3” on AP exam	-	-	-	tbd		tbd
% graduates attending college or other post-secondary	83	78	78	85		91

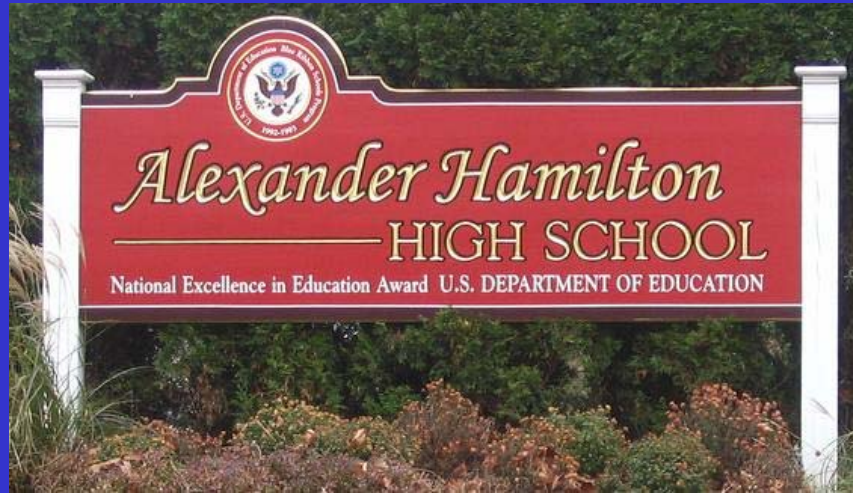
* In 2010, State Ed. increased Gr. 3 – 8 assessment & scoring difficulty. The grayed out 2007-09 trend is based on old scoring difficulty. 2015 targets set with 2010 as new baseline.

Priority Strategies

- **Implement a district-wide system to identify and monitor at-risk students and provide research-based interventions targeted to individual student needs.**
- **Implement strategies with the goal of having all students reading at their grade level benchmark.**
- **Improve the performance of the SWD and LEP student subgroups.**
- **Introduce enrichment and honors programs K-12 into the current curriculum while simultaneously increasing academic rigor in all classes.**

Medium and Long-term Strategies

- **Implement strategies and policies to increase the on-time graduation rate and decrease the dropout rate.**
- **Continue to implement initiatives to improve the literacy readiness skills of children ages 0 - 4.**
- **Maximize the impact of professional learning communities: refine the purpose, provide training, integrate academic support staff and evaluate effectiveness.**
- **Provide sustainable programs and initiatives for our parents and community that increase communication and support District and Building goals.**
- **Use formative and common summative assessment data to inform the teaching and learning process.**
- **Provide quality, sustained professional development that directly supports our strategic targets and priorities.**
- **Continually evaluate and systematically align K-12 curricula, instruction and assessments to local and New York State standards.**
- **Increase public relations initiatives that enhance the district's image in the community, develop our unique identity and foster school spirit.**
- **Create and implement an on-going short- and long-range plan to upgrade, repair and maintain district buildings and grounds.**



Buildings & Grounds



Buildings & Grounds AHHS

- The auditorium at Hamilton has a new look: Paint, curtains, stage floor
- Replaced fences in front & at upper field
- Main entrance refinished
- Gym floor refinished and walls painted
- Gym entrance painted
- Ceiling tiles replaced near gym

AHHS (Con't.)

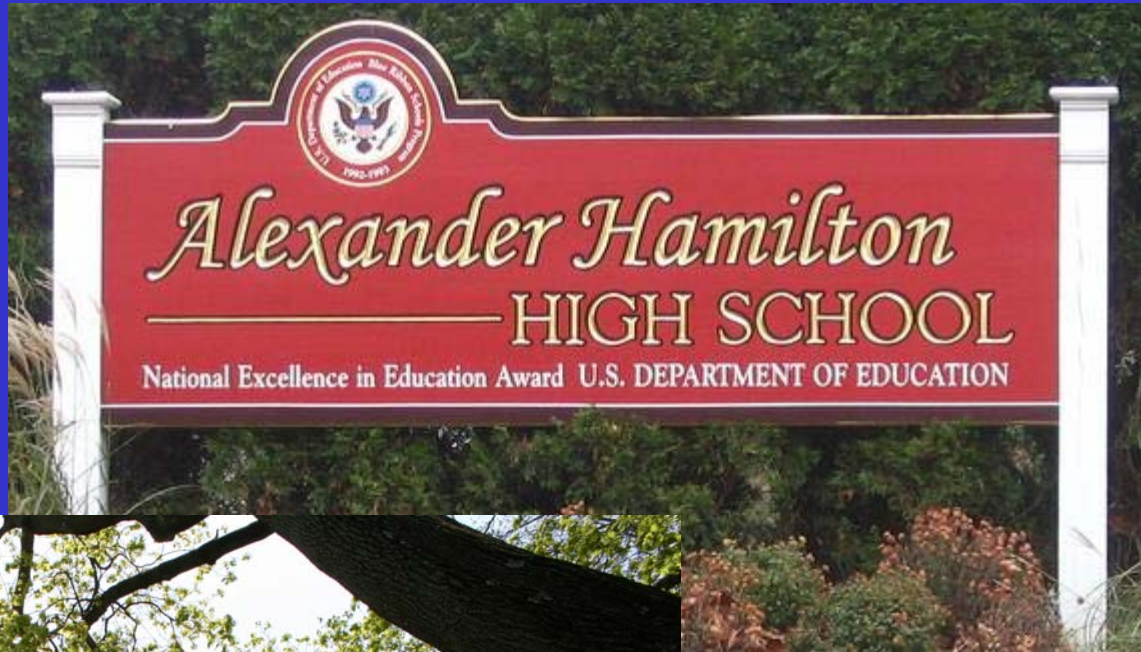
- Hallways: New baseboard trim
- Lockers painted throughout school
- Carpet in library is being replaced
- Team Room is being refurbished
- Cleared weeds and overgrown areas near Baseball Field

Buildings & Grounds Grady

- Grady boiler is being replaced
- Steam heat converted to hot water and pipes replaced in every classroom in old wing
- Asbestos abatement project
- New elevator installed (almost)
- Ceiling tiles replaced
- Ceiling light fixtures replaced

Buildings & Grounds Dixson

- Replaced floor tiles
- Cleaned and weeded around the fence line
- Gym doors will be replaced
- District Facilities Task Force Recommendations



Alexander Hamilton High School

Continuous Improvement Initiatives

- A committee of dedicated and passionate staff members met monthly to identify strategies to intervene with struggling students.
- Developed a support structure that utilizes RTI and IST processes to provide struggling students.
- Created an AIS/Credit Recovery initiative in grades 10-12.

Alexander Hamilton High School

PLC Successes

- The Professional Learning Communities met regularly in grade-level teams to identify and intervene with struggling students.
- Plans for 2010-2011 will include action planning to develop best practices



Alexander Hamilton High School

Student Advisories:

Students were provided with opportunities for success whereby teacher advisors developed lessons to prepare students to overcome academic challenges.

A comprehensive college exploration and research curriculum was developed to familiarize students from grades 7-12 with the process.

Plans include developing a student led conference model to be implemented in grades 7-11.

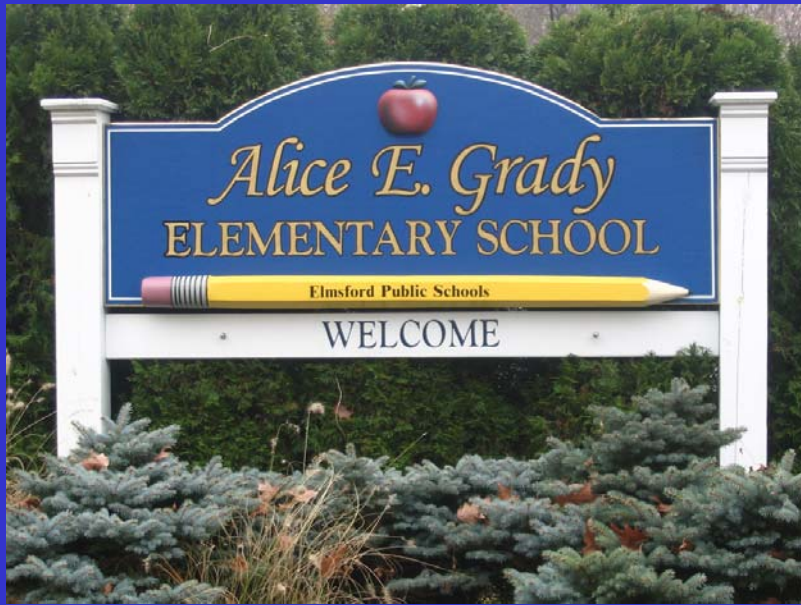


AHHS

Focus for 2010-2011

- Increase academic rigor in all classes
- Implement RTI model that effectively identifies, tracks, and intervenes with at-risk youth
- Develop a rigorous interdisciplinary literacy and numeracy curriculum





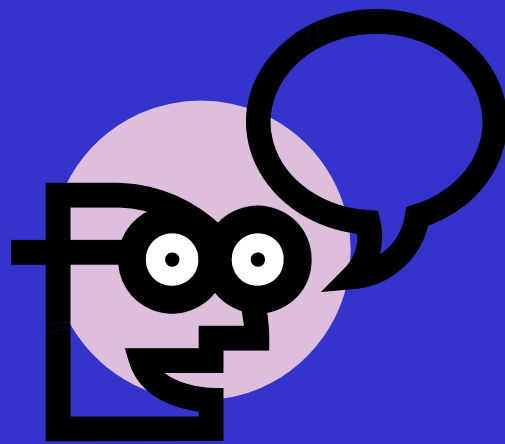
Grady & Dixson Focus for 2010-2011

- Continuous Improvement Team
- Alignment of PLC Goals to School & District Goals
- Develop Short Cycle Data Assessment Plan
- Reconnect with Parents
- Build Connections to AHHS



Grady & Dixson Focus for 2010-2011

- Document Current Processes
- Improve system of communication
- Develop “capstone” program for Grade 6 students



Technology

- Computer Replacement Cycle
- Netbook Carts
- Upgrades to Current System
- Mobile Projector Carts
- Related SMART Technologies
- Hardware/Infrastructure



Athletics

- 2009 Girls Cross Country
- League Champions -
Sections 1-Class D
Runner-Ups!
- 09/10 Girls Winter Track -
League Champions!
- 2010 Girls Spring Track -
League Champions!
- Tre Bracey - New York
State / Federation
Champion - Boys Long
Jump (Spring)!



2009-10 Individual Post-Season Honors

- 20 All League - Honorable Mention Selections
- 34 All League Selections
- 6 All Section - Honorable Mention Selections
- 5 All Section Selections
- 2 All County Selections
- 1 New York State Champion
- 1 Federation Champion



Grants & Other



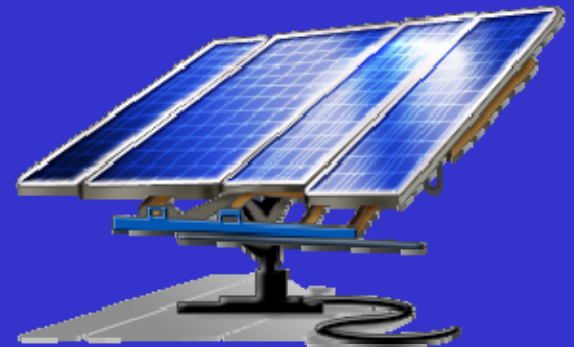
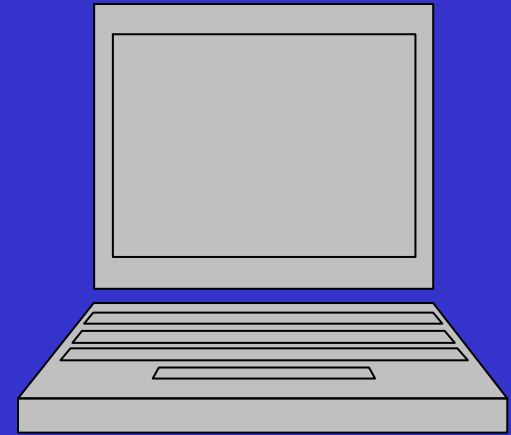
Grants & Other

- Two-Way Bilingual Education Grant
 - Only 4 districts in NYS
 - \$591,300
 - 5-year grant for dual-language program
- Bilingual ESL Supplementary Intervention Program Grant
 - \$24,525
 - After School Program for ESL
- Race To The Top
 - \$33,455.



Grants

- Accelus Grant
 - \$11,785 (matching grant)
 - 12 stand alone laptops
- Solar Panel Grant
 - \$250,000
- ESL Parent Involvement
 - \$200,000
 - Shared with 4 districts
- Secure Our Schools Grant
 - \$258,312.



Curriculum & Instruction

- Continued literacy work in K-6 through LitLife
- Program evaluation in K-12 mathematics
- Integrated K-6 ELA/SS curriculum writing project through PNW BOCES-

- New standards based report cards in grades K-4
- Manhattanville Professional Development Project for ESL
- Major curriculum review project to align our operational curriculum in K-12 ELA to the New York State Performance Indicators and Common Core Curriculum

Help us to improve.

YEAH!

Uh Oh!

What we like
about the
Elmsford School
District....

What we would
like to
change/improve
in the Elmsford
School District...